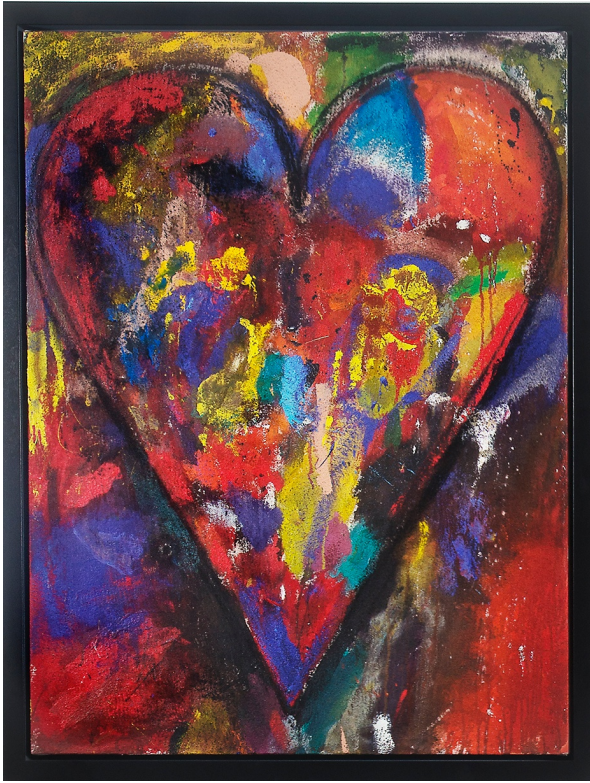


CASTERLINE | GOODMAN

GALLERY



Jim Dine: Have a Heart

February 1, 2014 – April 11, 2014

Jim Dine is one of the last living pop artists and is known for painting hearts, palettes, robes, and Pinocchio. Despite being associated with the Pop Art movement, Dine prefers to be recognized for his gestural approach, Dada assemblage, and collage techniques. In Casterline|Goodman's show of heart paintings, Dine has approached the canvas with a hands-on, expressive style that any viewer would be moved by.

When interviewed about his heart series, Dine said, "I use them as a template for all my emotions." It is part of Dine's method to work through a theme in many different mediums. Through sculpture, painting, prints, and drawings, Dine personally investigates his themes, which are sometimes simply lost or overlooked in everyday life. Dine once stated, "The figure is still the only thing I have faith in in terms of how much emotion it's charged with and how much subject matter is there."

Dine rose to the art scene in the 1960s with Claes Oldenburg and Allan Kaprow exhibiting "Happenings". He was also part of one of the first Pop Art shows in America called *New Painting of Common Objects*, which was held at the Norton Simon Museum, and featured other artists such as Andy Warhol, Ed Ruscha, and Roy Lichtenstein. As Dine continued his career in New York, he turned to

CASTERLINE | GOODMAN

GALLERY

painting and gave his pieces a personal touch by placing items such as clothing, shoes, and tools on his canvases. Dine finds inspiration through his memories and paints objects that have a strong intimate meaning and a sense of identity.

Jim Dine is internationally known and has work in the permanent collections of many museums including the Guggenheim Museum, The Whitney Museum of American Art, Jewish Museum in New York, National Gallery in Washington, DC, Boston Museum of Fine Art, Neuberger Museum of Art in Purchase, New York, Kemper Museum of Contemporary Art in Kansas City, Museum of Contemporary Photography in Chicago, Museum of Contemporary Art Jacksonville, and Museo di arte moderna e contemporanea di Trento e Rovereto in Italy.

CASTERLINE | GOODMAN

GALLERY

CASTERLINE | GOODMAN

GALLERY

CASTERLINE | GOODMAN

GALLERY



American Pop

December 21, 2012 – February 1, 2013

For their grand opening, the Casterline | Goodman Gallery will be showing *American Pop* featuring selections from Andy Warhol, Robert Rauschenberg, Jim Dine and others. The show will run from December 21, 2012 to February 1, 2013, with an Opening Reception on January 3, 2013 from 6-8pm.

In the decade after WWII, a “cultural revolution” was being lead by a new generation of activists, thinkers, and artists. Society protested against conformity by rallying against the Vietnam War, and sought for equality in the Civil Rights and Feminist Movement. The war helped America out of the depression, and when soldiers returned there were more jobs, higher wages, and the incentive to

CASTERLINE | GOODMAN

GALLERY

spend. The new market lead to heavy consumerism and an overbearing media, which artists were greatly inspired by.

This artistic movement was lead by famed artists such as Andy Warhol, Robert Rauschenberg, Roy Lichtenstein, Tom Wesselmann, and James Rosenquist. These artists were profoundly aware of the new cultural developments and used advertising, celebrity images, photographs, and sometimes even ready-made objects to combine and create into new images and meaning. The movement gained the title, “Pop” through its use of primary colors, images of the everyday mundane, and their commercial method of mass-producing works, such as silkscreening. The Pop Art movement favored realism, which challenged the traditional, post-war movement of Abstract Expressionism that focused on emotion and the inner conscience; therefore, lacking a preconceived image. Pop art continues to be one of the most loved movements of the twentieth century, and has been labeled by Artprice as “collectors’ masterpieces”.